

SALE

1305 Lees Chapel Road
Greensboro, NC



- Medical Construction Build-out in 2014
- 6,108 Square Feet
- Cross-parking
- Move-In Ready
- As Is
- Call for price and details

Note: Furniture and Equipment not included



Essa Commercial Real Estate, Inc.
1931 New Garden Road, Suite 200
Greensboro, North Carolina 27410



Carl Essa, CCIM, President
Carl@essainc.com
ESSAinc.com

Office (336) 297-1000
Fax (336) 297-1039
Cell (336) 314-4100



📍 ESSA Commercial Real Estate
1931 New Garden Road, Suite 200
Greensboro, North Carolina 27410

🌐 ESSAinc.com
📞 Office (336) 297-1000

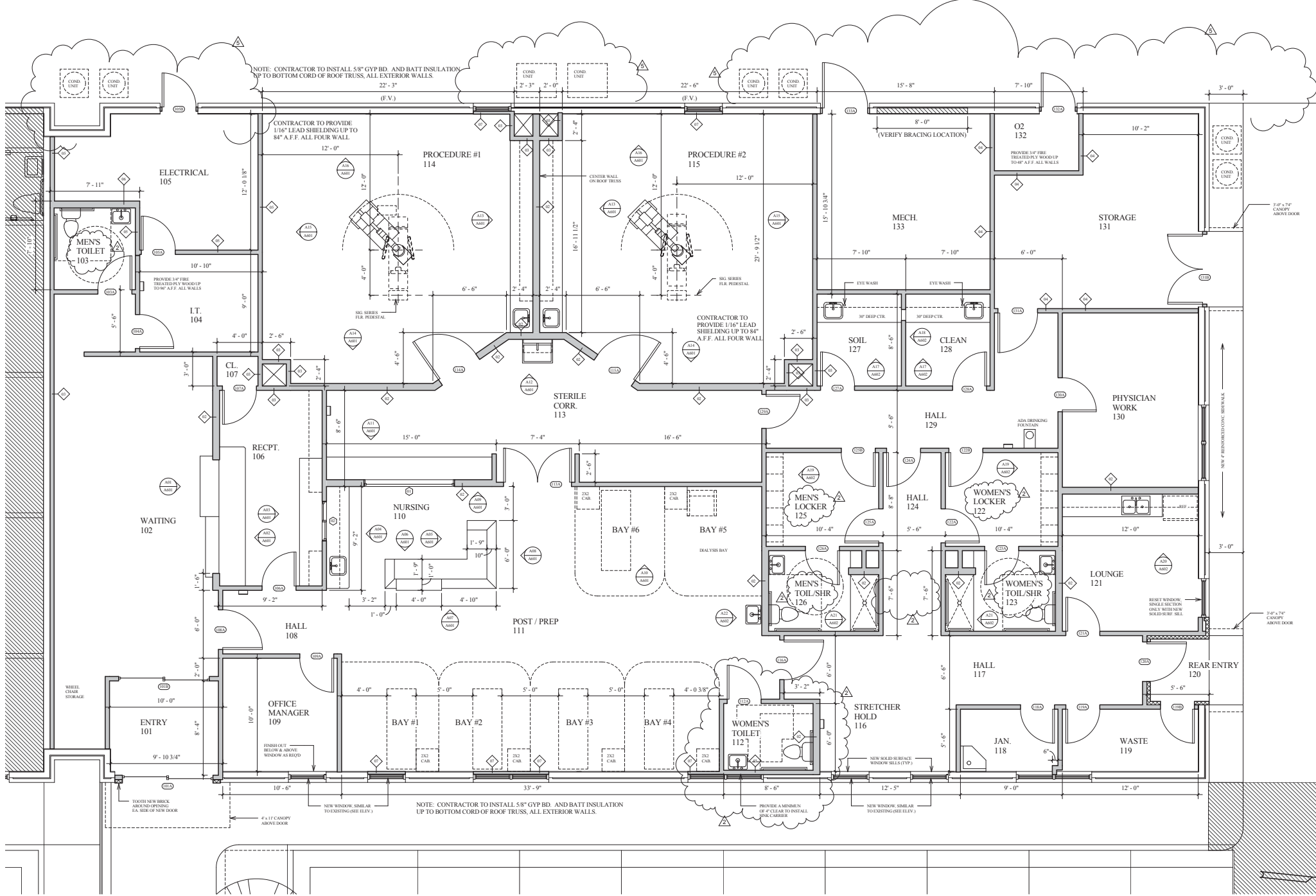
📠 Fax (336) 297-1039
📱 Cell (336) 314-4100



📍 ESSA Commercial Real Estate
1931 New Garden Road, Suite 200
Greensboro, North Carolina 27410

🌐 ESSAinc.com
📞 Office (336) 297-1000

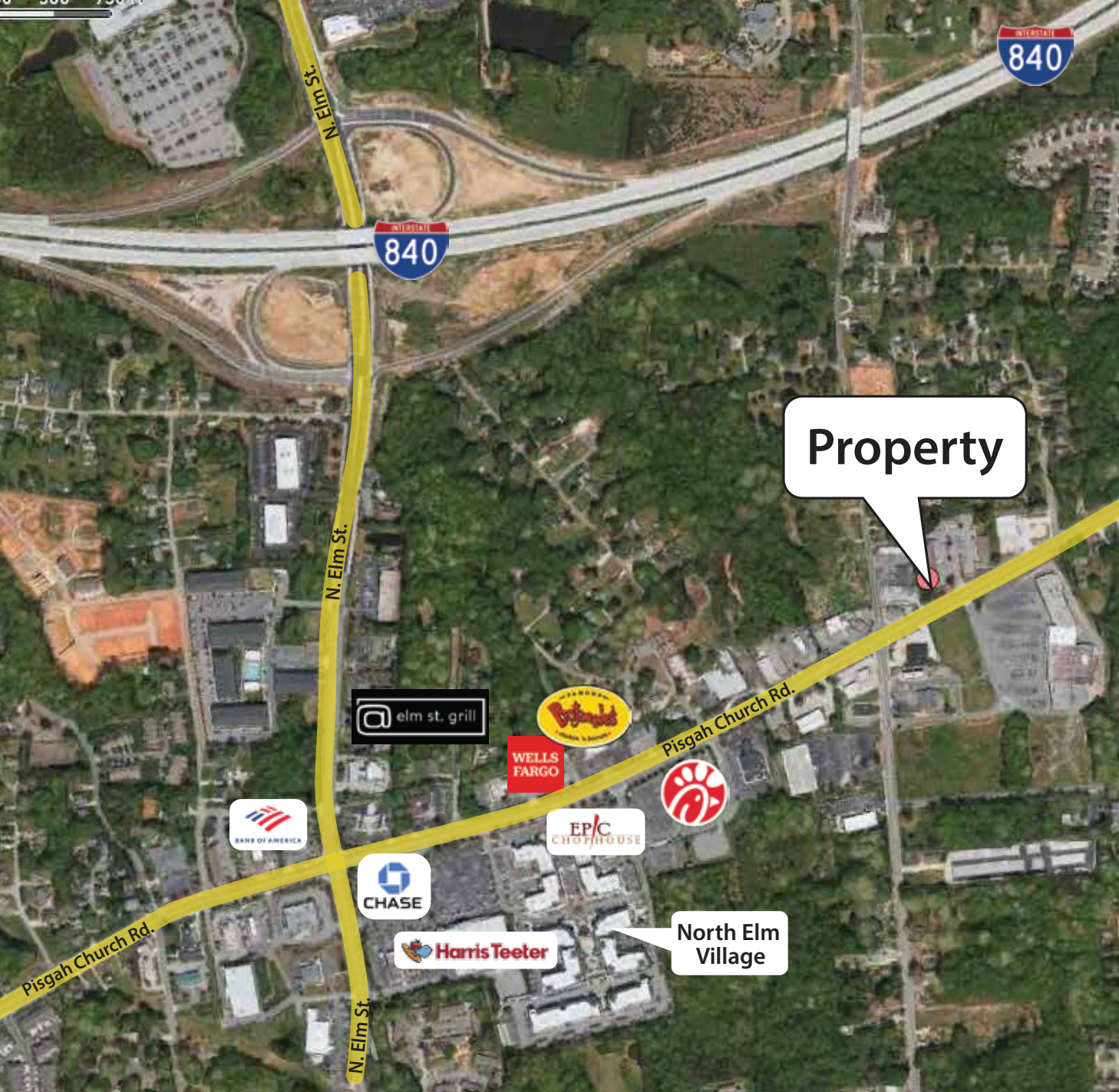
📠 Fax (336) 297-1039
📱 Cell (336) 314-4100



📍 **ESSA Commercial Real Estate**
 1931 New Garden Road, Suite 200
 Greensboro, North Carolina 27410

🌐 **ESSAinc.com**
 📞 **Office (336) 297-1000**

📠 **Fax (336) 297-1039**
 📱 **Cell (336) 314-4100**



SOLID LOCATION

Greensboro, NC

WELL DEVELOPED AREA

Surroundings Include:
Retail Shops, Banks, Restaurants,
& Other Professional Buildings

EASY ACCESS

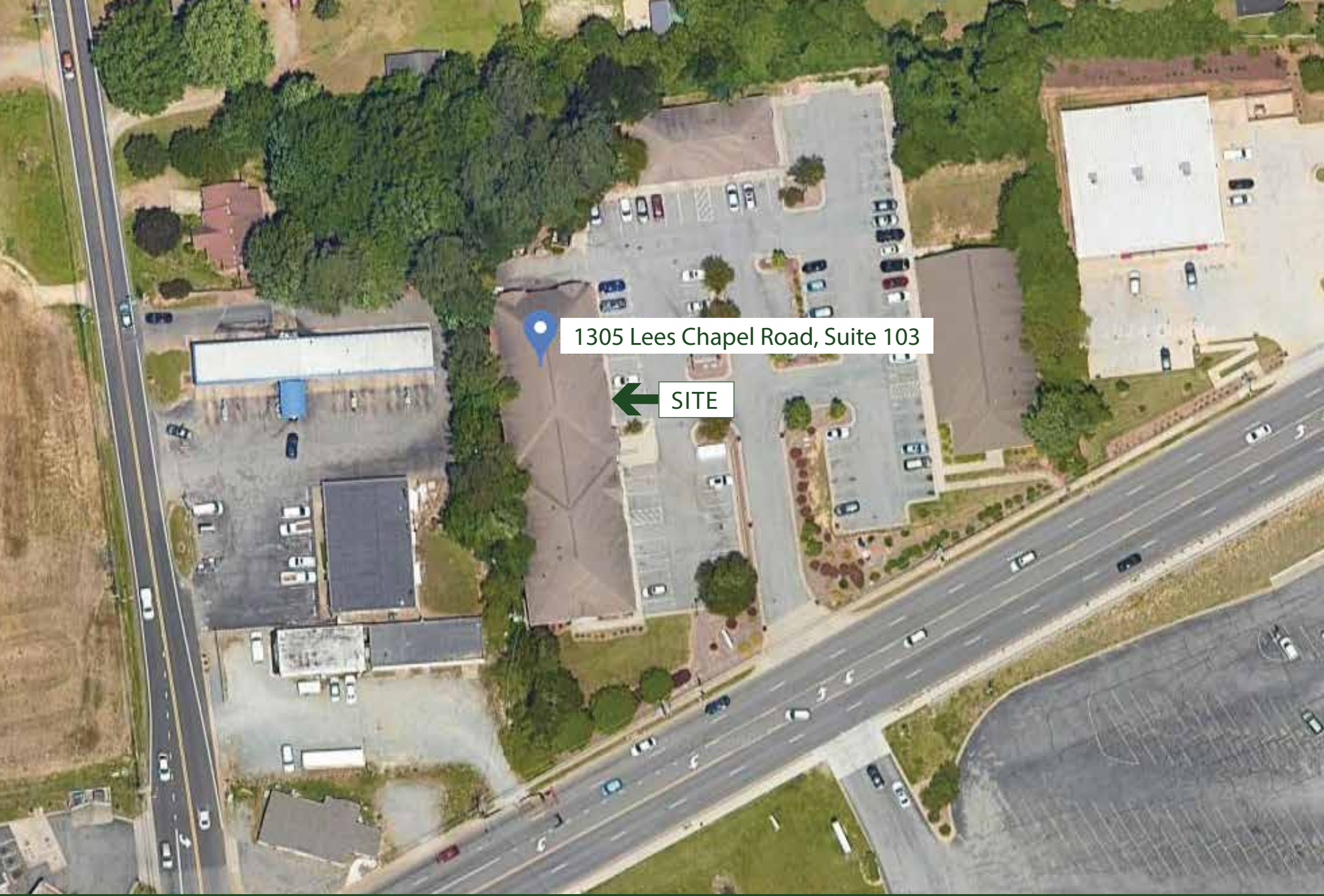
- Lees Chapel / Pisgah Church
- Elm Street / Yanceyville Street
- I-840



📍 ESSA Commercial Real Estate
1931 New Garden Road, Suite 200
Greensboro, North Carolina 27410

🌐 ESSAinc.com
📞 Office (336) 297-1000

📠 Fax (336) 297-1039
📱 Cell (336) 314-4100



1305 Lees Chapel Road, Suite 103

← SITE



📍 ESSA Commercial Real Estate
1931 New Garden Road, Suite 200
Greensboro, North Carolina 27410

🌐 ESSAinc.com
📞 Office (336) 297-1000

📠 Fax (336) 297-1039
📱 Cell (336) 314-4100

Demographic and Income Comparison Profile

1305 Lees Chapel Road, Greensboro, North Carolina, 27455
Rings: 1, 3, 5 mile radii

Prepared by Esri
Latitude: 36.13495
Longitude: -79.78890

	1 mile	3 miles	5 miles
Census 2020 Summary			
Population	10,977	63,184	145,180
Households	4,865	26,627	58,174
Average Household Size	2.21	2.35	2.27
2024 Summary			
Population	11,290	64,489	148,270
Households	4,922	27,197	59,695
Families	2,717	15,972	33,746
Average Household Size	2.25	2.35	2.27
Owner Occupied Housing Units	1,990	15,458	33,400
Renter Occupied Housing Units	2,932	11,739	26,295
Median Age	34.5	39.2	36.3
Median Household Income	\$50,533	\$66,766	\$65,508
Average Household Income	\$77,840	\$101,065	\$99,947
2029 Summary			
Population	11,279	64,899	150,013
Households	4,940	27,515	60,799
Families	2,712	16,066	34,160
Average Household Size	2.24	2.33	2.26
Owner Occupied Housing Units	2,096	16,137	34,918
Renter Occupied Housing Units	2,844	11,377	25,880
Median Age	36.5	40.3	37.5
Median Household Income	\$59,790	\$79,618	\$78,006
Average Household Income	\$91,497	\$118,072	\$116,274
Trends: 2024-2029 Annual Rate			
Population	-0.02%	0.13%	0.23%
Households	0.07%	0.23%	0.37%
Families	-0.04%	0.12%	0.24%
Owner Households	1.04%	0.86%	0.89%
Median Household Income	3.42%	3.58%	3.55%